

# CFA-TM

## ACCESSORIES



### DESCRIPTION

Filling breathers

### FILLING BREATHERS

Filling plugs with inbuilt air breather; flanged tank connection with standard dimensions; protection basket against ingestion of coarse parts (removable for CFA23); zinc plated steel body and chrome plated steel cap; seals by cork (NBR - Nitrile for pressurized version only).

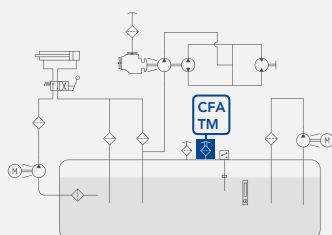
### FILTER ELEMENT

Filter element (not replaceable):  
Impregnated cellulose 3µm (filtration degree in air)  
Polyurathan foam 10µm (filtration degree in air)

For sizes CFA21 & CFA22 only the plug has a safety chain.



### HYDRAULIC DIAGRAM



Is this datasheet the latest release? Please check on our website.

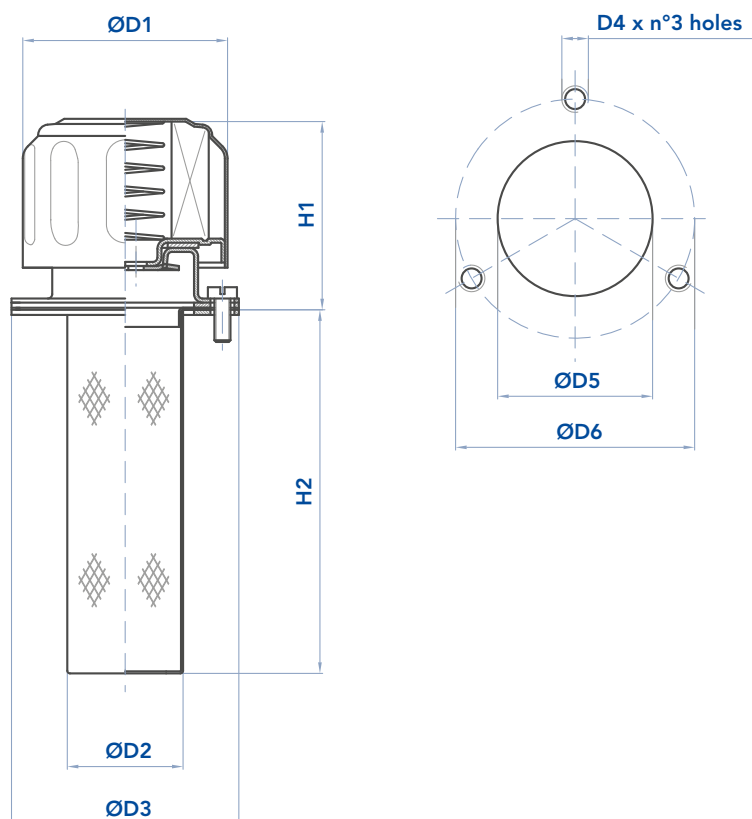
### ORDERING AND OPTION CHART

C	F	A	COMPLETE FILTER FAMILY				
			SIZE & LENGHT	11	21	22	23
			MOUNTING PATTERN				
			S = DIN 24557/2 flange	S	S	S	S
			T = plug extension	-	-	-	T
			W = welding flange	-	-	-	W
			PRESSURIZATION VALVE				
			W = without	W	W	W	W
			A = 0,35 bar	-	A	A	A
			SEALS				
			C = sugheroil	C	C	C	C
			N = NBR Nitrile (with A option only)	-	N	N	N
			FILTER MEDIA				
			CC = impregnated cellulose 10 µm	CC	CC	CC	CC
			PE = polyurathan foam	PE	PE	PE	PE
			ACCESSORIES				
			P = padlock holder	-	P	P	P

### INSTALLATION DRAWING

#### DWG A

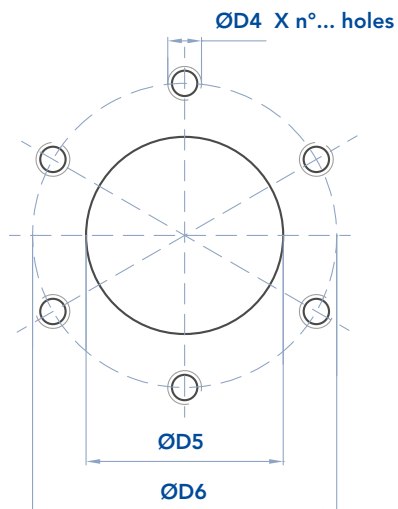
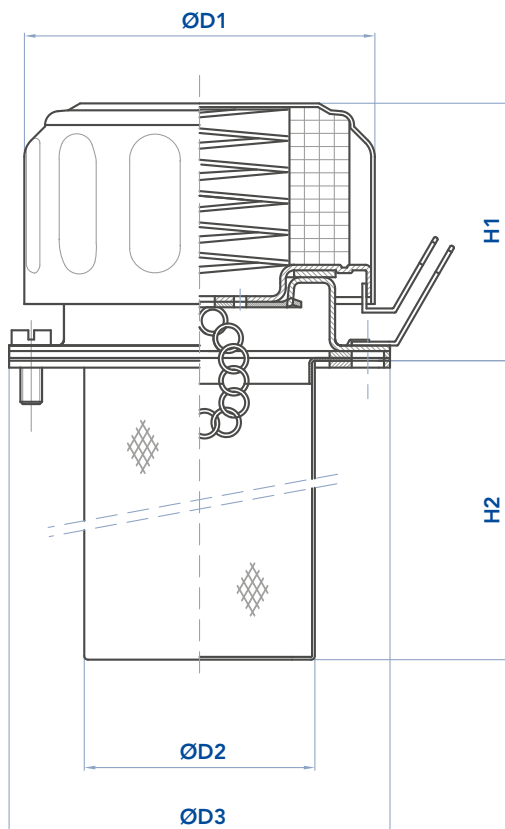
Air breather filling plug  
Flange connection



## INSTALLATION DRAWING

### DWG B

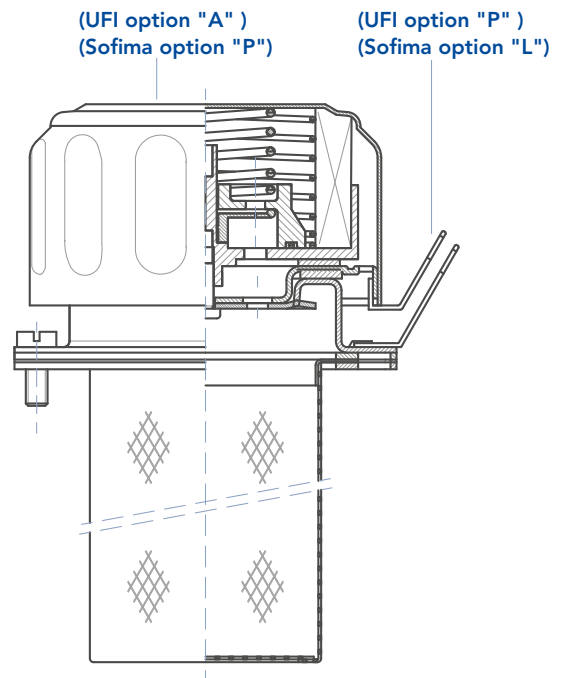
Air breather filling plug  
Flange connection



Tank connection:  
DIN 24557/2

### DWG B

Pressurized air breather filling plug



# CFA-TM

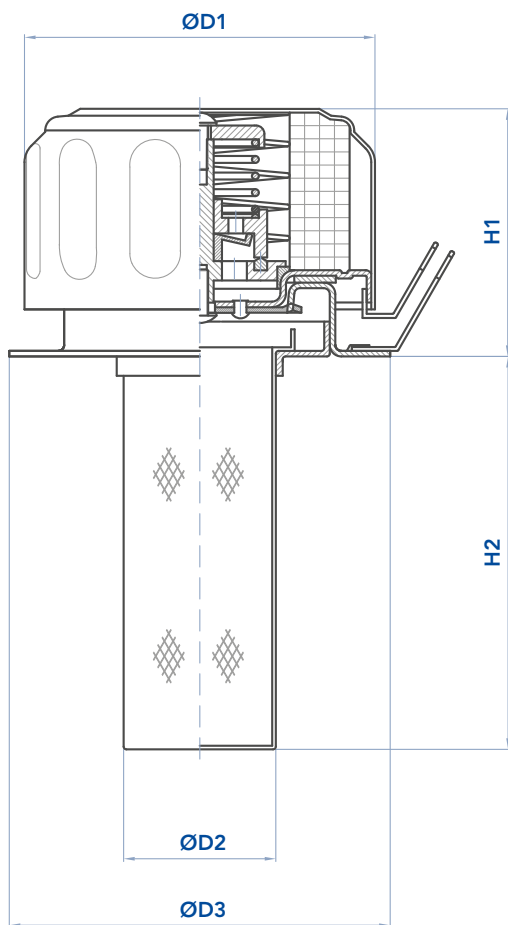
## ACCESSORIES



### INSTALLATION DRAWING

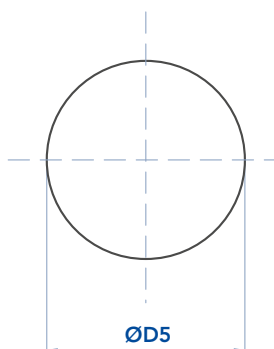
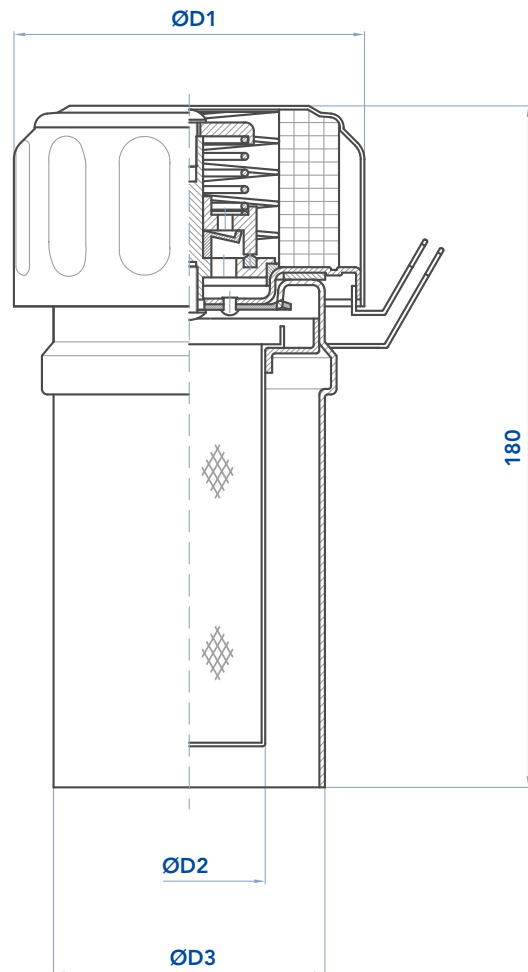
#### DWG C

Air breather filling plug  
Welding flange



#### DWG D

Air breather filling plug with extension



## INSTALLATION DRAWING

### DIMENSIONS

	filtr. µm	flow rate (l/min)	D1	D2	D3	D4	Holes n°	D5	D6	H1	H2	Pressure Valve	DWG
CFA11SWCCC TM150G65	3	150	47	29	52	M5	3	31	41	48	64	-	A
CFA11SWCPE TM450G65	10	300	47	29	52	M5	3	31	41	48	64	-	A
CFA21SW-CC TM178G78	3	450	80	50	83	M5	6	52	73	57	78	-	B
CFA21SW-PE TM478G78	10	750	80	50	83	M5	6	52	73	57	78	-	B
CFA21SA-CC TM178G78P3	3	450	80	50	83	M5	6	52	73	57	78	0,35 bar	B
CFA21SA-PE TM478G78P3	10	750	80	50	83	M5	6	52	73	57	78	0,35 bar	B
CFA22W-CC TM178G150	3	450	80	50	83	M5	6	52	73	57	148	-	B
CFA22W-PE TM478G150	10	750	80	50	83	M5	6	52	73	57	148	-	B
CFA22A-CC TM178G150P3	3	450	80	50	83	M5	6	52	73	57	148	0,35 bar	B
CFA22SA-PE TM478G150P3	10	750	80	50	83	M5	6	52	73	57	148	0,35 bar	B
CFA23SW-CC TM178G100	3	450	80	40	83	M5	6	42	73	57	100	-	B
CFA23SW-PE TM478G100	10	750	80	40	83	M5	6	42	73	57	100	-	B
CFA23SA-CC TM178G100P3	3	450	80	40	83	M5	6	42	73	57	100	0,35 bar	B
CFA23SA-PE TM478G100P3	10	750	80	40	83	M5	6	42	73	57	100	0,35 bar	B
CFA23WW-CC TM178GS100	3	450	80	38	83	-	-	40	-	53	100	-	C
CFA23WW-CPE TM478GS100	10	750	80	38	83	-	-	40	-	53	100	-	C
CFA23WA-CC TM178GS100P3	3	450	80	38	83	-	-	40	-	53	100	0,35 bar	C
CFA23WA-CPE TM478GS100P3	10	750	80	38	83	-	-	40	-	53	100	0,35 bar	C
CFA23TW-CC TM178T100	3	450	80	38	-	-	-	-	-	-	-	-	D
CFA23TW-CPE TM478T100	10	750	80	38	-	-	-	-	-	-	-	-	D
CFA23TA-CC TM178T100P3	3	450	80	38	-	-	-	-	-	-	-	0,35 bar	D
CFA23TA-CPE TM478T100P3	10	750	80	38	-	-	-	-	-	-	-	0,35 bar	D